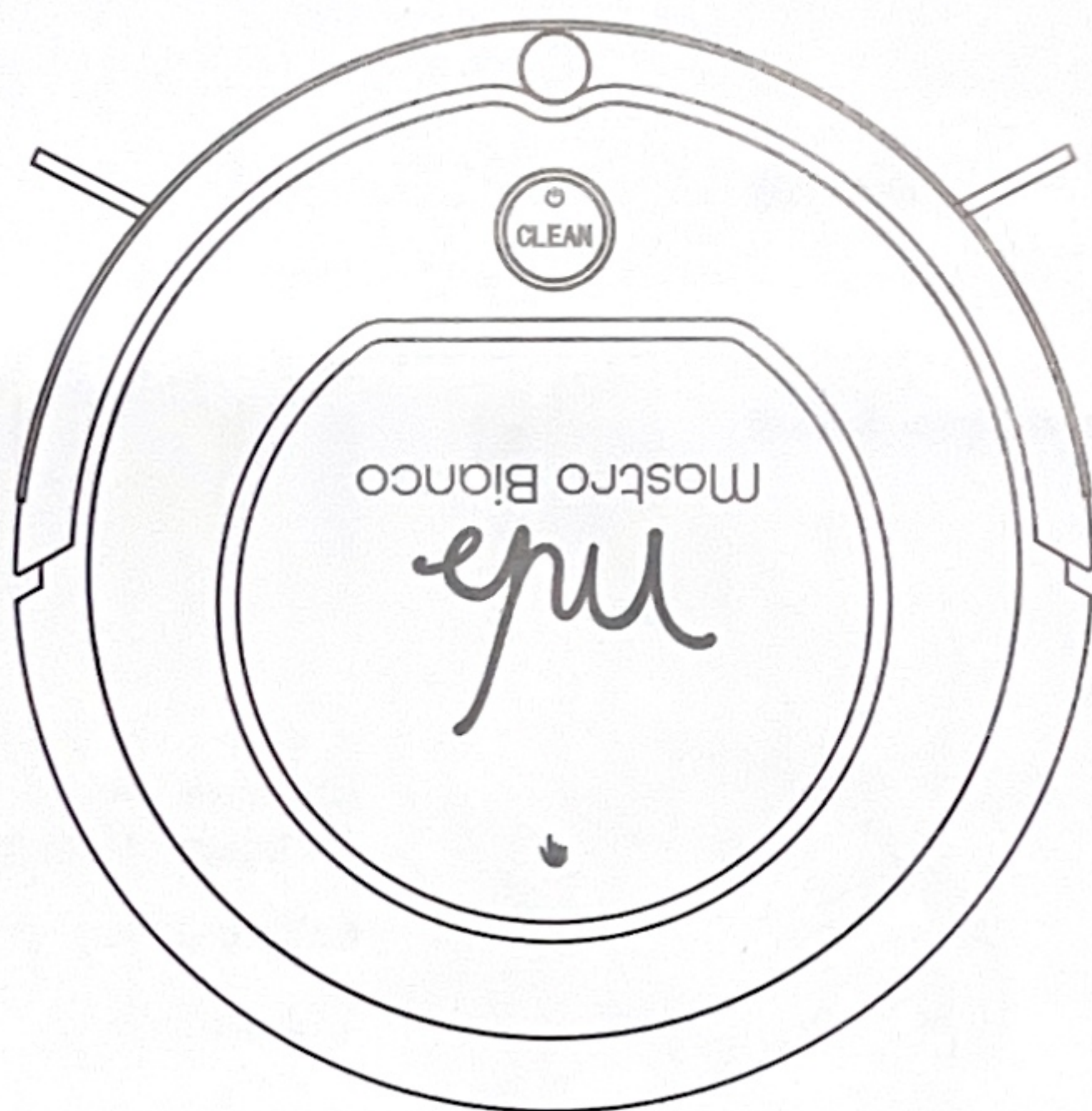




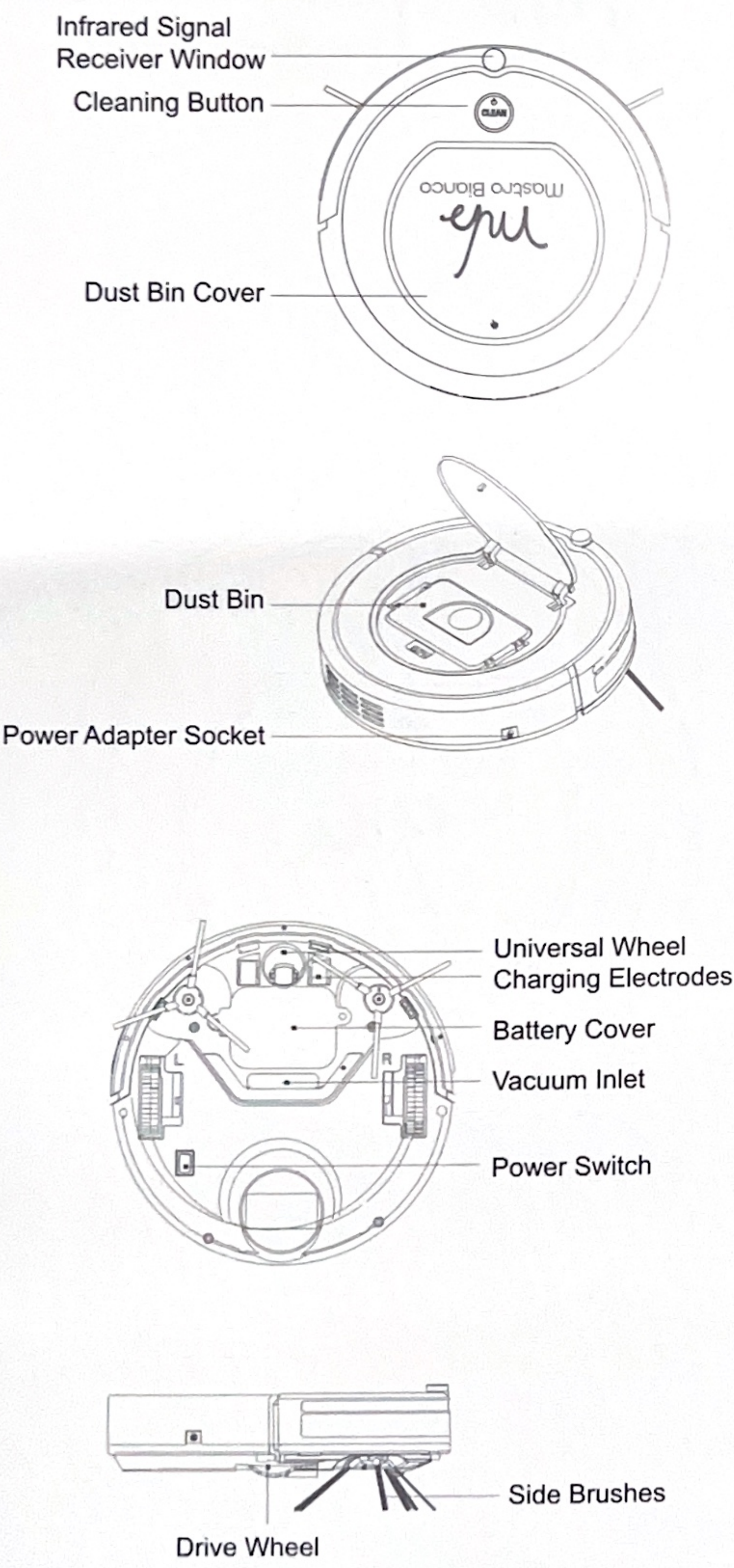
E200 Robot Vacuum Product Manual



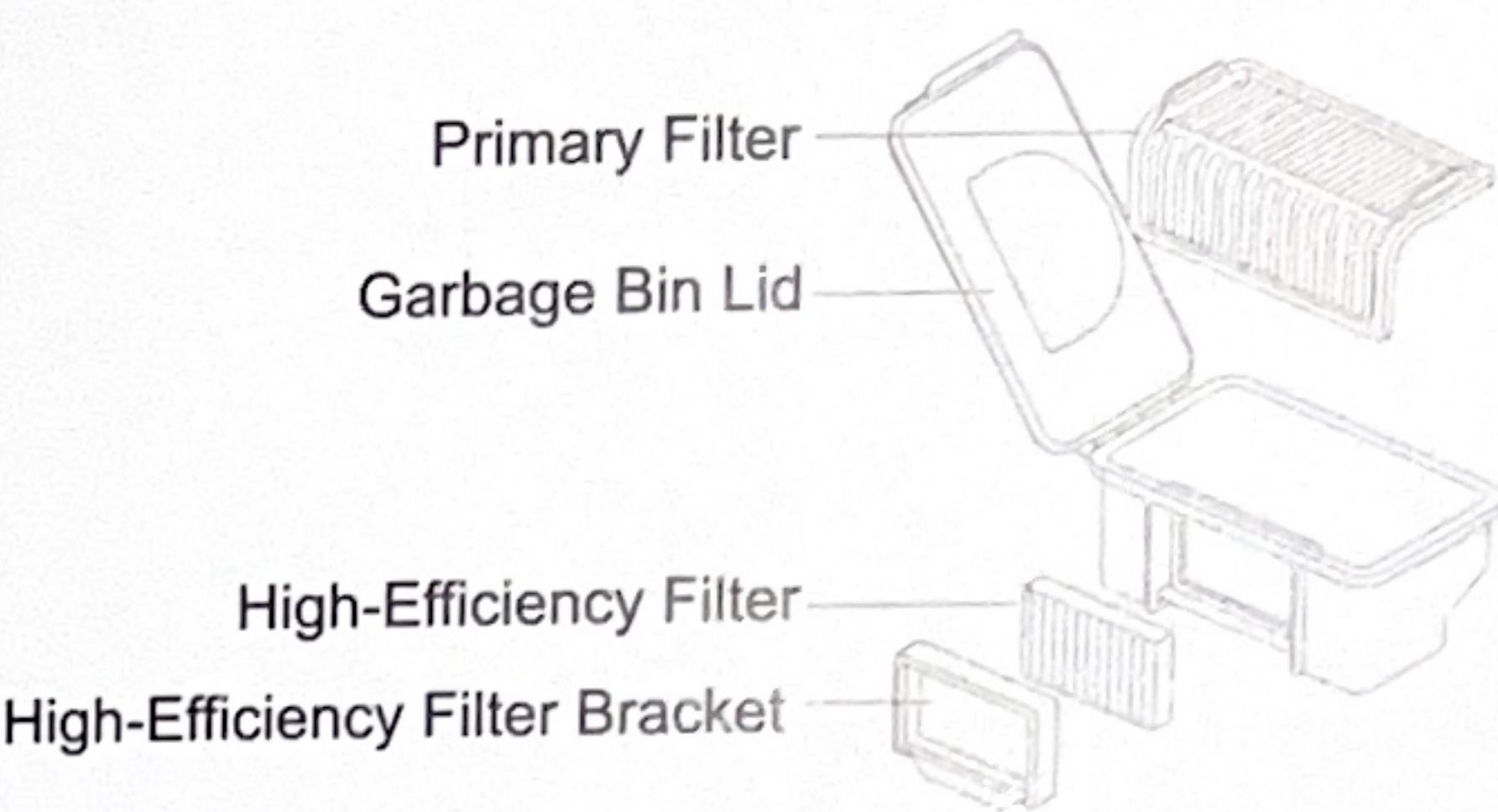
Please read this manual carefully before use and store it properly.

Product Components

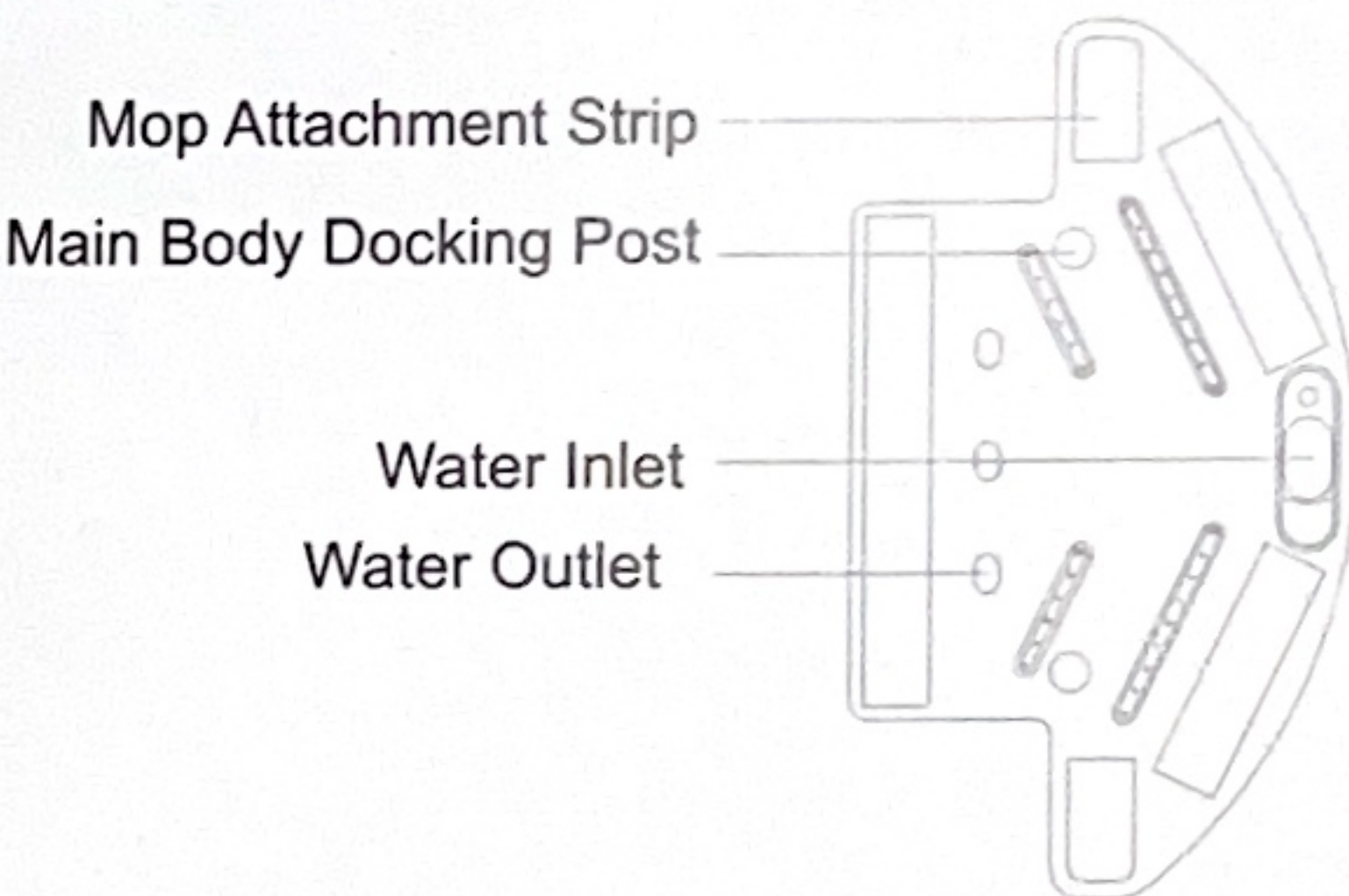
Main Unit



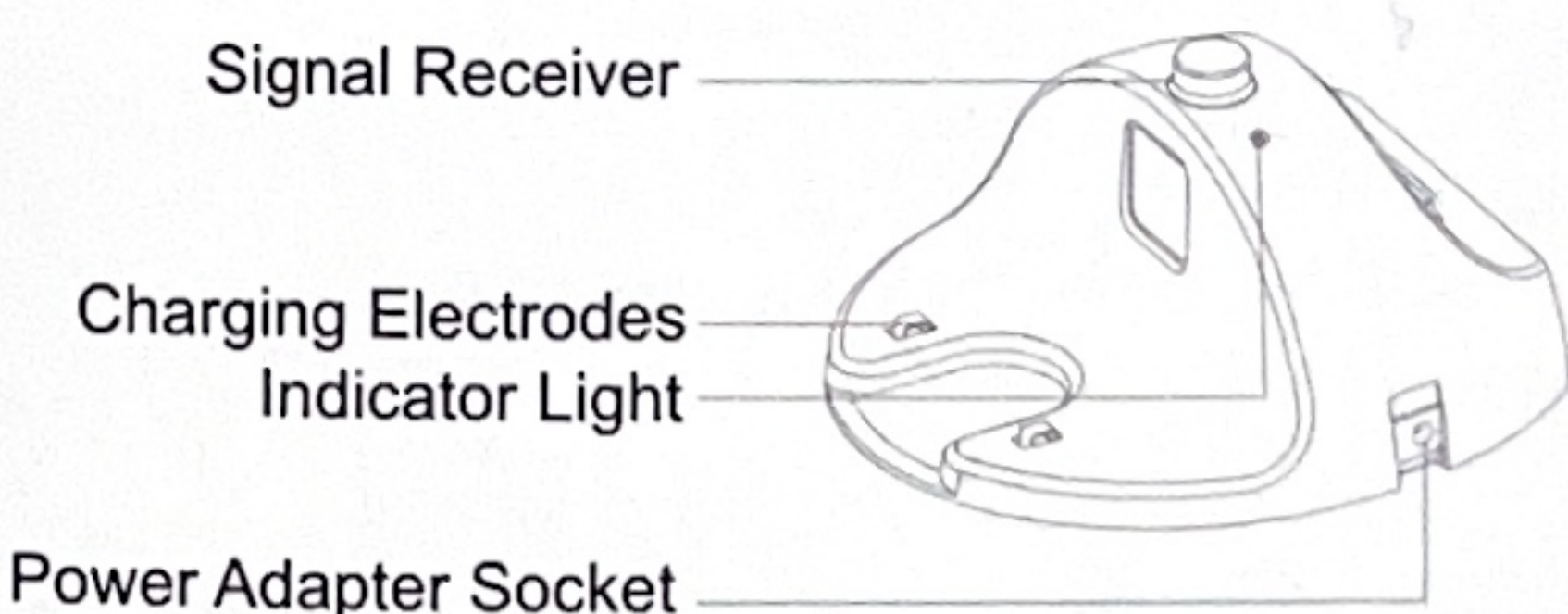
Dust Bin



Water Tank



Charging Dock



Indicator Light Explanation

Standby	Blue light stays on
Cleaning	Blue light stays on
Error Report	Red light flashing
Returning to Charge	Red light stays on
Charging	Blue light flashing
Fully Charged	Blue light stays on
Network Configuration	Purple light flashing

APP Connection

1. Scan the APP QR code on the last page, download, and complete registration and login.

2. APP Connection

- ① Turn on the power, the machine enters standby mode. Press the cleaning button on the body to hear the voice prompt "Robot is connecting to network" while the purple light flashes. The machine enters the network configuration.
- ② Open the app and follow the app guide to connect.



Go to the homepage and click to add the device according to the guide.



Please enter WiFi username and password



Finish adding, and enter the machine's operation page

Notice: This product only supports 2.4GHz Wi-Fi. For users using 5GHz, please enable the 2.4GHz signal on your router before connecting.

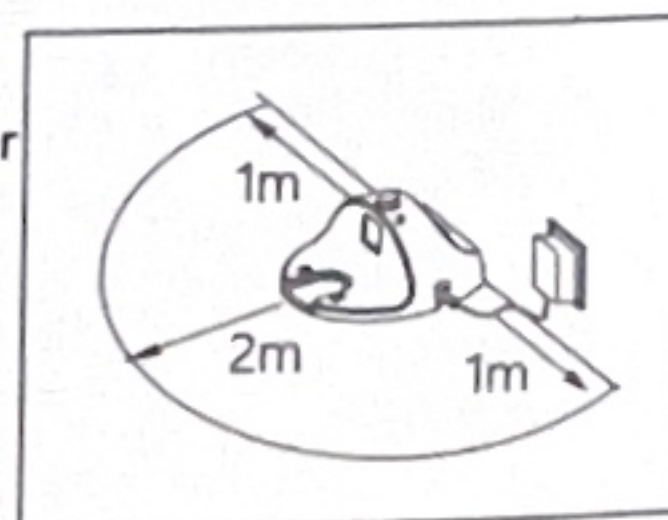
Product Operation/Maintenance

Friendly Tips:

Before using the robot vacuum, check the environment in your home and try to move unnecessary obstacles to allow the robot to function smoothly.

1. Place the charging dock

Place the charging dock, connect the adapter and power. The power indicator on the charging dock will stay on. Place the charging dock against the wall and remove all obstacles 1 meter to the left, 1 meter to the right, and 2 meters in front of the charging dock.



2. Power Switch

Turn on the power switch at the bottom of the machine, the main unit indicator light will turn on, and a start-up sound will play while the machine enters standby mode.

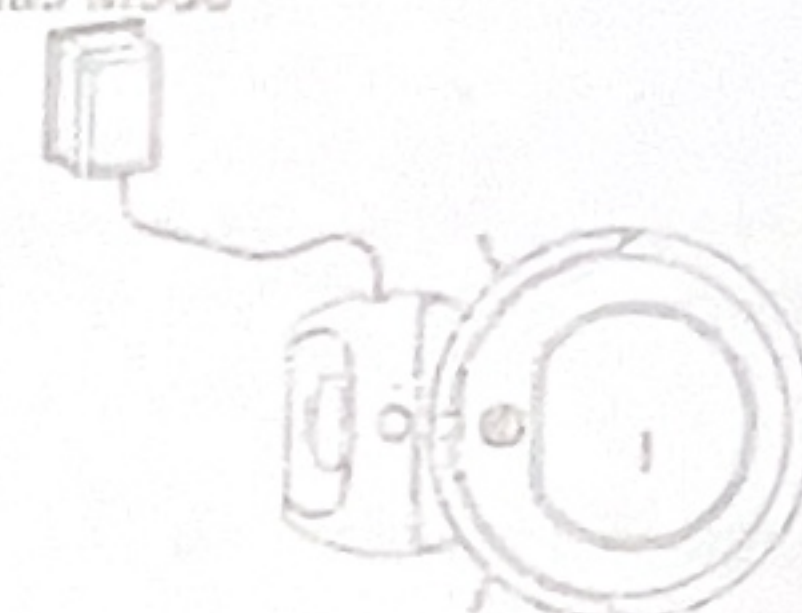
3. Product Charging

The product can be charged in the following two ways:

Manual Mode



Automatic Mode

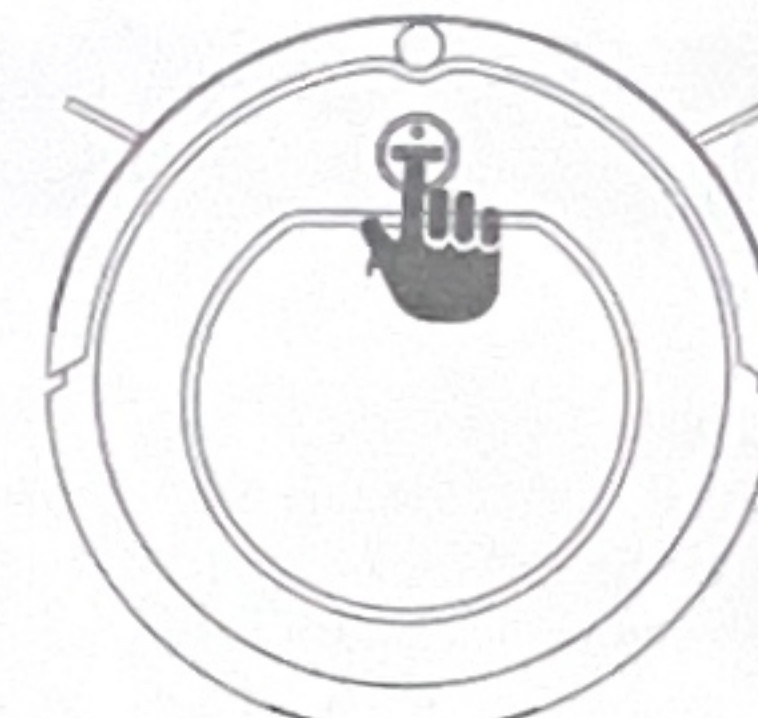
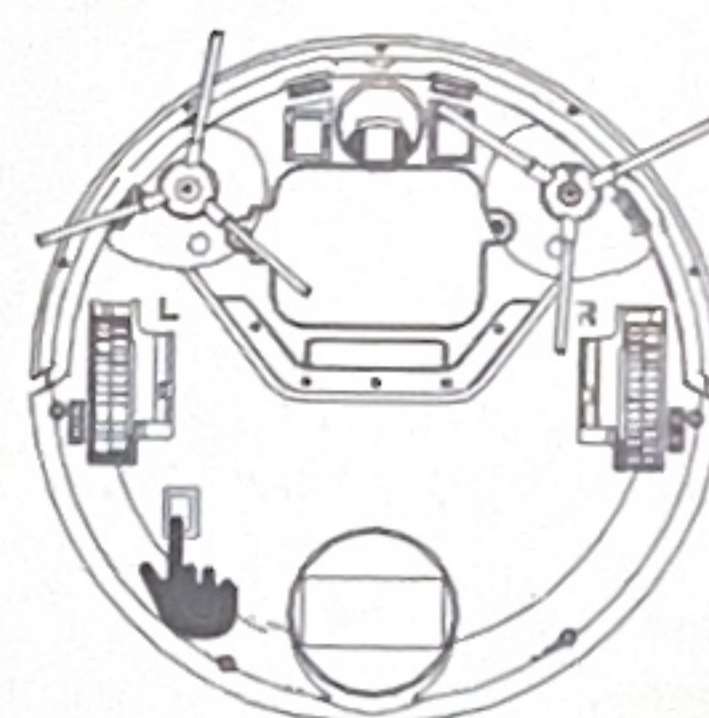


Notice:

- ① When charging, please turn on the power switch and remove the water tank;
- ② When the battery level is below 20%, the machine will automatically start searching for the charging dock;
- ③ When charging using the charging dock, pressing the cleaning button will interrupt charging and start cleaning, while using the direct charge button on the charger will not work;
- ④ If the machine is not used for a long time, please turn off the power switch;
- ⑤ The cleaning button indicator will flash when charging, and stay solid when fully charged.

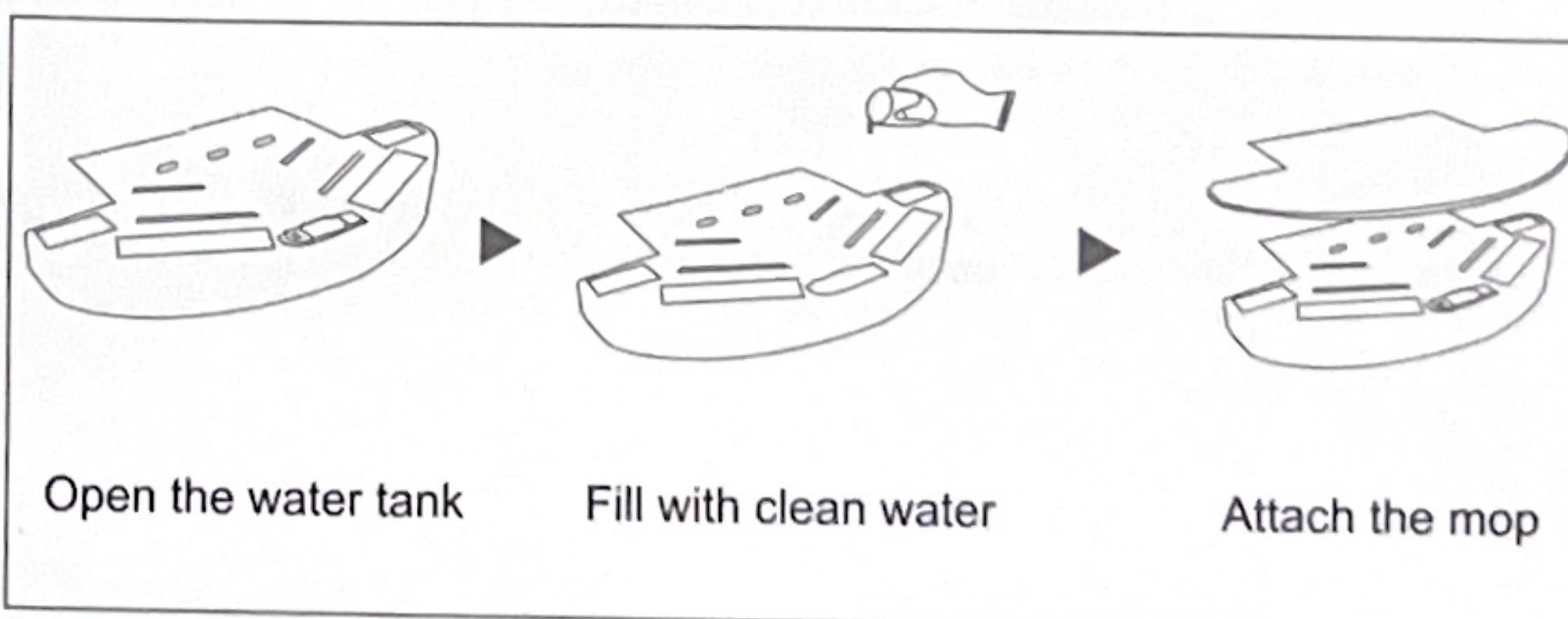
4. Working Mode

Turn on the bottom power switch, press the main unit cleaning button or APP cleaning button, and the machine will enter the corresponding cleaning mode.



Note: If the machine is in sleep mode, press the main unit cleaning button to wake it up, then press the main unit cleaning button again to start working.

Water Tank

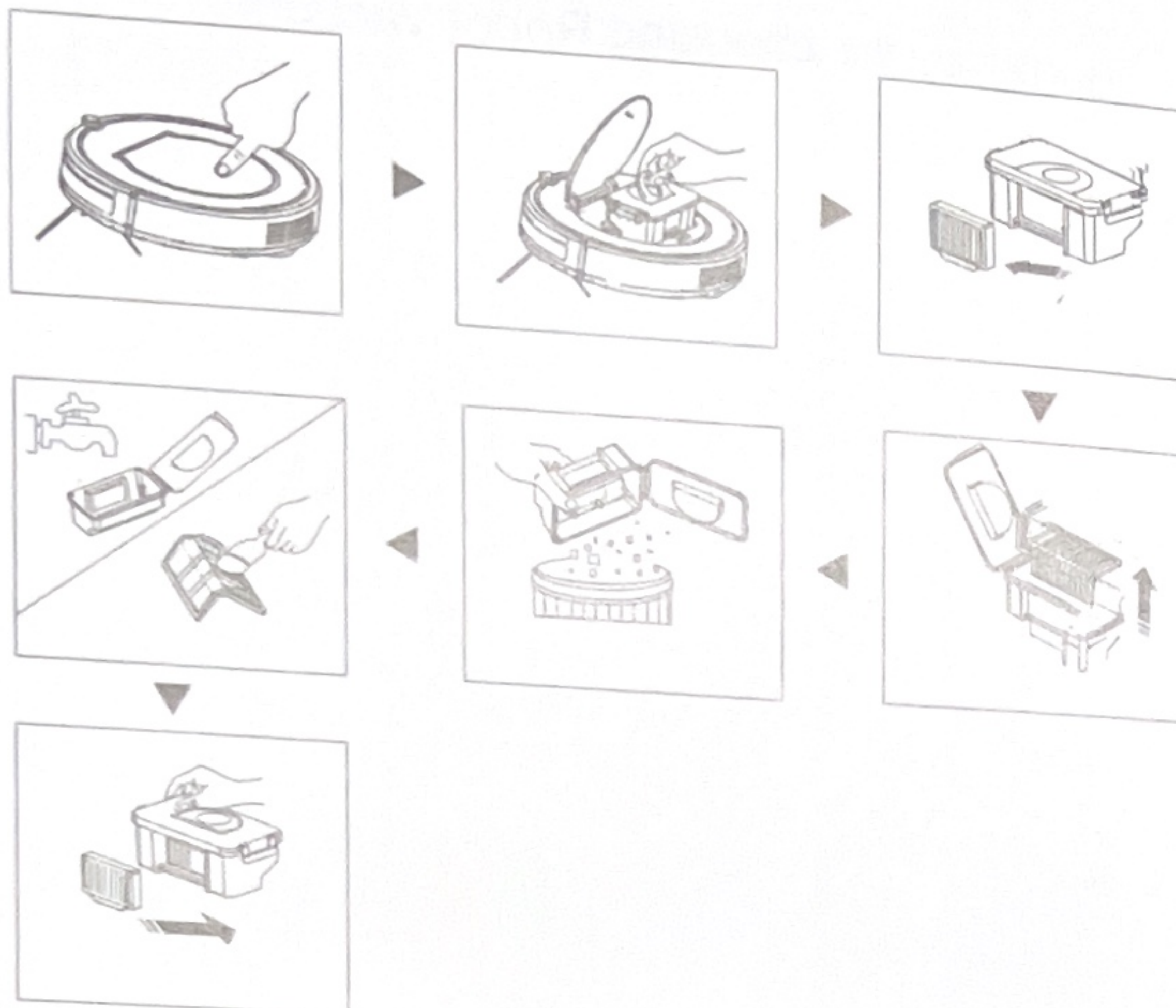


Open the water tank

Fill with clean water

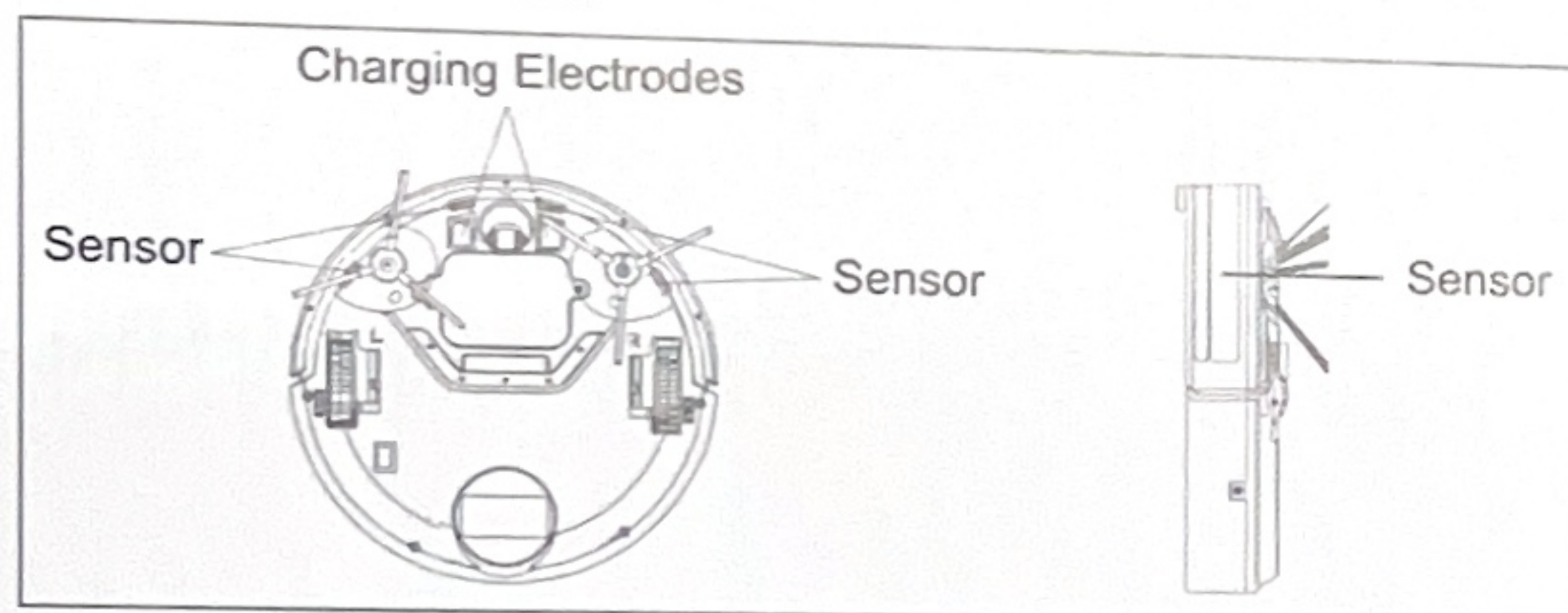
Attach the mop

Garbage Bin and Filter Cleaning



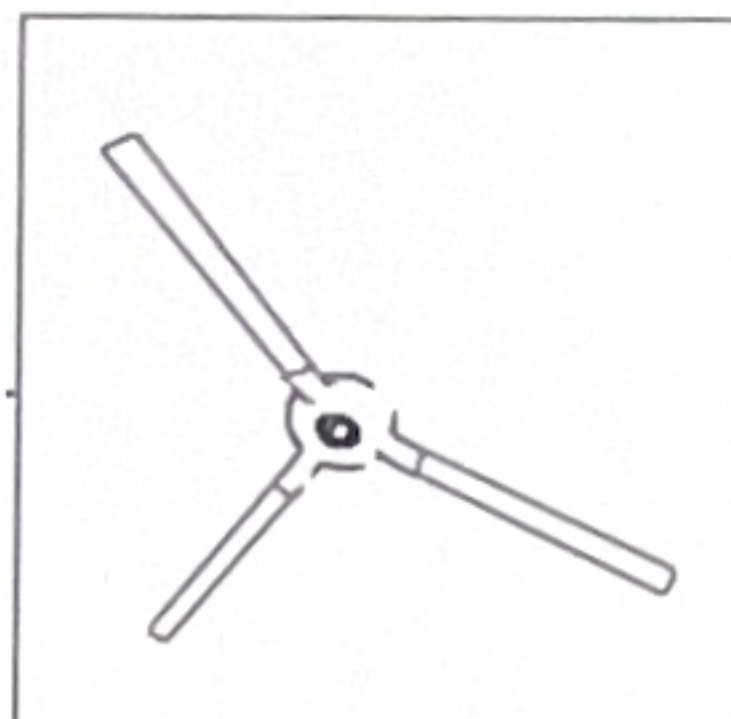
Sensor Lens and Charging Electrodes Cleaning

Gently wipe the sensor and charging electrode with a cleaning tool or soft cloth.



Left and Right Side Brushes Cleaning

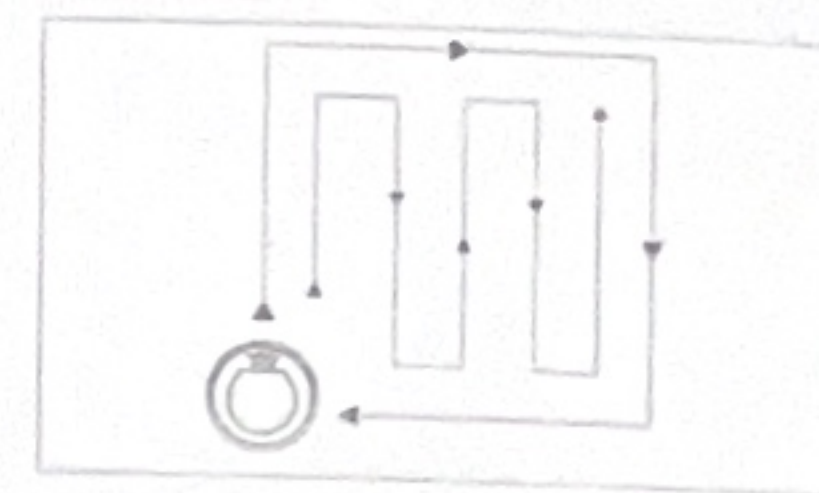
When side brushes become dirty, please remove the left and right side brushes and clean them with clean water. Dry them before using again. If the side brushes are damaged and cannot work properly, please replace them.



Cleaning Mode

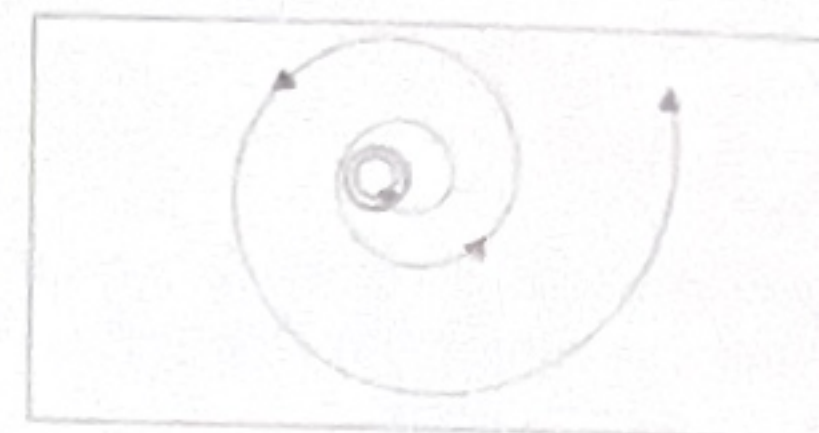
1. Automatic Cleaning

Press the cleaning button on the main unit or the cleaning button on the app interface, and the product will enter the arc-shaped path cleaning mode. After cleaning, it will automatically find the charging dock for recharging.



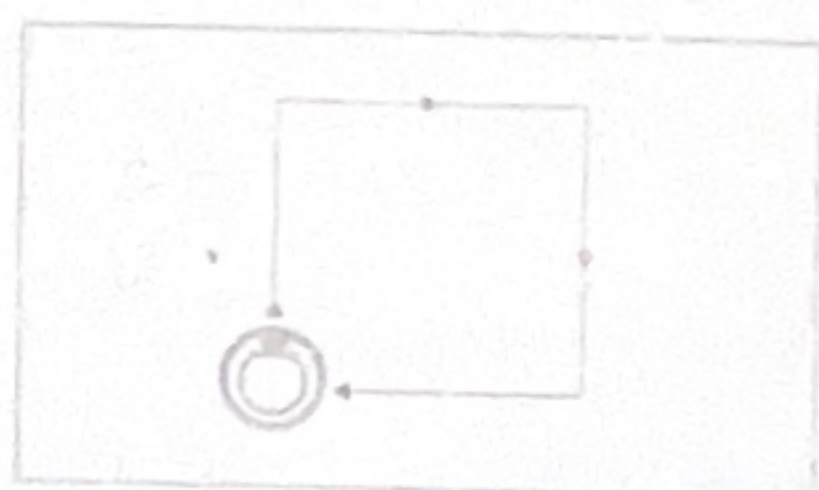
2. Fixed-Point Cleaning

Press the fixed-point cleaning button on the app interface, and the machine will clean in a spiral pattern centered around the machine. After two clockwise turns, it will reverse back to the starting point.



3. Edge Cleaning

Press the edge cleaning button on the app interface, and the machine will clean along the edges.



Battery Safety and Handling

1. Do not use other chargers, only use the charger provided with this machine, otherwise, it may cause damage to the product, electric shock, or fire caused by high voltage.
2. The battery must be replaced by the manufacturer, its maintenance department, or professionals in similar departments.
3. Battery leakage can cause injury! If the battery leaks, make sure to avoid contact with eyes or skin. If accidental contact occurs, immediately wash hands with clean water and rinse eyes. If discomfort persists, seek medical attention immediately.
4. When discarding this product, first cut off the power, and then remove the battery from the product. Follow local laws, regulations, and environmental policies to dispose of used batteries.
5. The battery should only be removed when it is completely drained. Under no circumstances should the battery come into contact with metal objects. The steps for removing the battery are as follows:
 - a. Run the machine to a low battery state where it can no longer clean without touching the charging station.
 - b. Turn off the product.
 - c. Unscrew the dust bin battery cover and remove the battery cover.
 - d. Press the clip to pull out the battery connector and remove the battery.

Product Parameters

Size	320*320*85mm
Operating Voltage	14.8V
Input Voltage	19V
Input Current	1A
Dust Bin Capacity	350ml
Charging Time	4-6h
Usage Time	90-120 min


Configuration List

Main Unit	Charging Dock	Power Adapter
Water Tank	Cleaning Tools	User Manual
Side Brushes	Mop	Dust Bin

Troubleshooting

Questions	Solution
The machine keeps moving backward	1.Avoid using the robot in environments with strong light or on black carpets. 2.Check if the floor detector of the machine is covered by dust or garbage, and clean it with a dry cloth. 3.Check if the front bumper is blocked by foreign objects, remove any foreign objects and use the machine again.
The machine cannot start	1.Check if the power switch of the machine is turned on. 2.Check if the machine has power, charge it and then turn it on.
The machine cannot automatically return to charge	1.Check if the LED light on the charging dock is on. 2.Check if there are obstacles between the machine and the charging dock. 3.Charge manually when the battery is low.
The machine cannot charge	1.Check if the original power adapter is used and properly plugged in. 2.If the machine's battery is deformed or damaged, stop using it.
APP Connection (Connection Failed)	1. Connect near the router. 2.Enter the username and password incorrectly when connecting. 3.Only use 2.4G WiFi, does not support 5G WiFi.

Hazardous Substances

Part Name	Harmful substances					
	(pb)	(Hg)	(Cd)	(Cr (VI))	(PBB)	(PBDE)
Plastic part	○	○	○	○	○	○
Hardware	○	○	○	○	○	○
Electronic components	X	○	○	○	○	○
Battery	○	○	○	○	○	○
Other	○	○	○	○	○	○
<p>Explanation: This table is prepared in accordance with the provisions of SJ/T11364.</p> <p>○ : Indicates that the content of the hazardous substance in all homogeneous materials of the component is below the limit requirements specified in the current effective version of GB/T26572.</p> <p>X : Indicates that the content of the hazardous substance exceeds the limit requirements specified in the current effective version of GB/T26572 in at least one homogeneous material of the component, and there is currently no mature alternative solution in the industry, which complies with the requirements of the EU RoHS directive.</p> <p> The number inside this symbol indicates that the environmentally friendly service life of the product under normal use conditions is 10 years.</p>						

Warranty Card

User Name		User must keep the warranty certificate. Lost certificates are not replaced.
Detailed Address		
Phone Number		
Postal Code		
Purchase Date		
Purchase Store		
Invoice Number		
Warranty Date		
Purchased Model		
Serial Number		

Thank you for choosing Robot Vacuum.

